

Are you looking for an efficient, clean heat exchanger?

Efficient, compact heat exchanger

HX-10A

RoHS



■ Features

- ★ Clean, all metal structure
- ★ 316L stainless steel used for surface exposed to gas
- ★ Built-in thermal switch to detect overheating
- ★ Built-in thermocouple
- ★ Compact size
- ★ Maximum operating temperature of 200°C

Corporate Headquarters

4-1-23 Sekinotsu, Otsu City, Shiga 520-2277 Japan
Phone.+81-(0)77-536-2210 FAX.+81-(0)77-536-2215

Tokyo Branch Office

3F Hattori Build., 4-30-14 Yotsuya Shinjyuku-ku Tokyo 160-0004, Japan
Phone.+81-(0)3-5366-2801 FAX.+81-(0)3-3341-3513

LINTEC KOREA

#822 Sicox Tower, Sangdaewon-dong, Jungwon-gu,
Seoungnam-si, Gyeonggi-do, 462-726, Korea
Phone. +82-(0)31-732-2191 FAX. +82-(0)31-732-2194

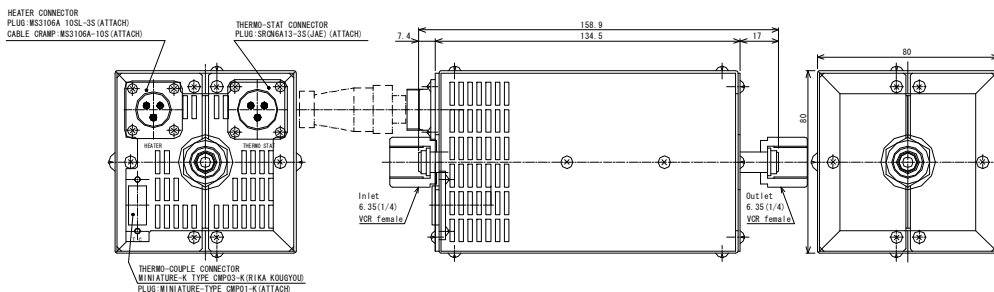
 **LINTEC CO., LTD.**

HX-10A Specifications

Note : Please prepare temperature controller to use this product.

Product name		Heat Exchanger	
Model name		HX-10A-100	HX-10A-200
Withstand pressure		1MPa	
Operating temp.	T230	200° C Max	
	T160	130° C Max	
Thermal switch	T230	230°C±10°C OPEN (200°C±15°C CLOSE)	
	T160	160°C±10°C OPEN (130°C±10°C CLOSE)	
		AC125V/15A	AC250V/10A
Leak integrity		Less than 1x10 ⁻¹¹ Pa·m ³ /sec(He)	
Materials exposed to gas		SUS316L, Au	
Fittings		Inlet, Outlet: 6.35mmVCR female	
Heater power requirements		120V 500W	240V 875W
Thermocouple		K type LIS 0.75grade (2)	
Pressure drop		9.8kPa(50L/min)	
Weight		1.6kg	

Dimensions



Ordering information

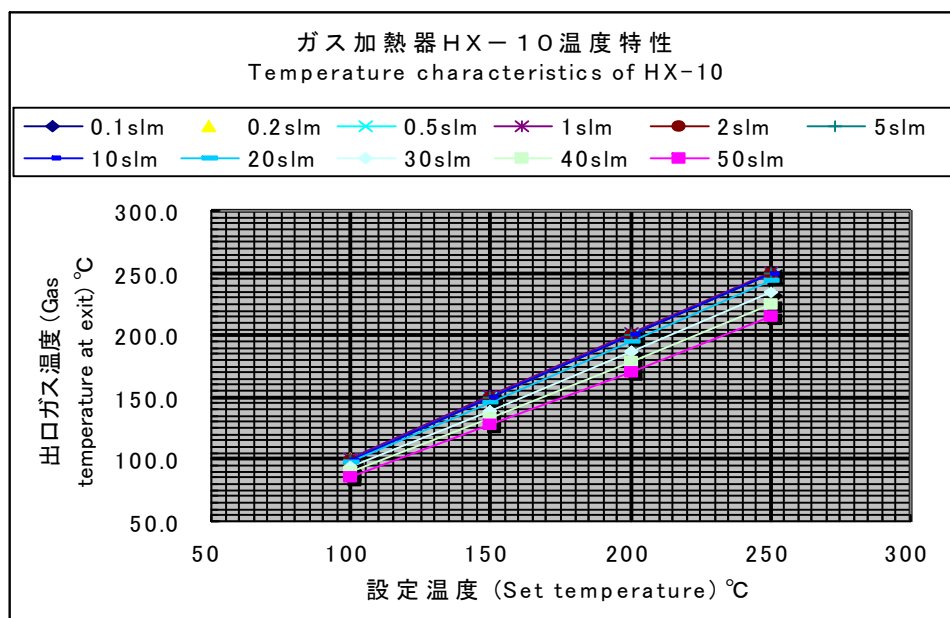
HX-10A-AA-BB

AA: Types of heater
100V or 200V

BB: Types of Thermal switch
T160 or T230

Consult us to select those 4 types of heater and Thermal switch.

Temperature characteristics



*For information on specifications not included in this catalog or for other matters please contact LINTEC's sales representative.

*This catalog is valid as of Sep, 2008.

*Changes in specifications may be made without prior notice.

*Before shipping to a third country, consult LINTEC.

Mykron

Mykron Microelectronics Co., Ltd. 上海资方微电子有限公司

No.12 Yi, Chao Yang Men Street (North), Beijing, 100020, China

<http://www.mykrns.com>

Beijing: Tel. (86)10-6551 0500 Fax (86)10-6551 0501

Shanghai: Tel. (86)21-6888 5300 Fax (86)21-6888 5301